

Stop Arm Violation Survey Information & Examples

While school buses remain incredibly safe, we all know that students who ride buses are most vulnerable when they are outside the bus in the “danger zone”. Every year Kansas assists the National Association of State Directors of Pupil Transportation Services (NASDPTS) in coordinating a one-day national survey to determine the prevalence of illegal passing of school buses. **The State Board of Education has requested all school districts in Kansas participate in this survey.**

We are enlisting your assistance in this important project. This year, on the date specified on the School Bus Safety Website Upcoming Events page, please have your school bus drivers observe and report all instances of motorists illegally passing their school buses. Please collect this data and enter your district or company’s total violations by following the link listed on our webpage <https://www.ksde.org/Agency/Fiscal-and-Administrative-Services/School-Finance/School-Bus-Safety/School-Bus-Safety-Illegal-Passing-Information> A link to an optional worksheet to assist you can also be found on the webpage. The following information and examples are to assist you and avoid confusion in completing the one-day stop arm violation survey.

Please follow these steps when completing the survey:

1. Select the district you are reporting for from the drop-down menu.
2. Enter the name of the individual completing and entering your district/contractor’s information.
3. Select your geographical region of the state.
4. Indicate YES or NO whether you transported students on the count day and/or had stop arm violations. Your answer will determine whether you answer questions 5-10.
5. Enter the total number of buses from your district/contractor participating in the survey.
6. Enter the total number of violations you had for the morning, mid-day and afternoon route.
7. Enter the total number of violations which passed your bus from the front and rear.
8. Enter the total number of violations which passed your bus on the left and right side of the bus.
9. Enter the total number of violations for the type of roadway.
 - Which occurred on a paved roadway with only 2 Lanes of Traffic
 - Which occurred on a paved roadway with only 2 Lanes of Traffic and a shared left turn lane
 - Which occurred on a paved roadway with more than 2 Lanes of Traffic
 - Which occurred on a paved roadway with more than 2 Lanes of Traffic and a shared left turn lane
 - Which occurred on an UNPAVED roadway (sand, gravel, dirt, etc.)
10. Enter the total number of violations which occurred on a State or US highway.

Remember to participate and fill out a survey even if you do not have any violations or did not transport any students. Answer every question and enter zeros rather than leaving a field blank. **Please make sure your information is accurate.** You must see the following screen for a successful submission of your district’s data.



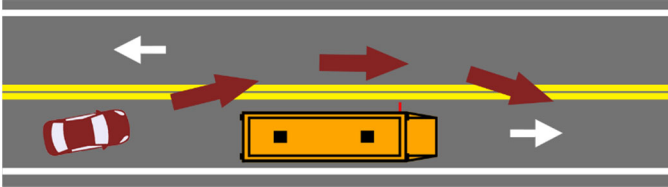
Thank you for submitting your responses!

SUBMIT - You must see - THANK YOU FOR TAKING THE SURVEY! - after clicking SUBMIT

Kansas leads the world in the success of each student.

The following are examples of illegal passing and roadway types.

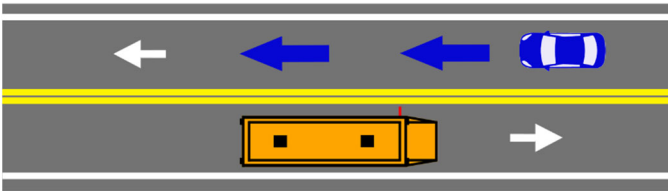
Example #1 - Direction of Travel and Side of Bus
Example



1. This is an example of rear violation on the left side of the stopped school bus. The red car passes the bus from the rear on the left side.

Direction of Travel – REAR
Side of Bus - LEFT

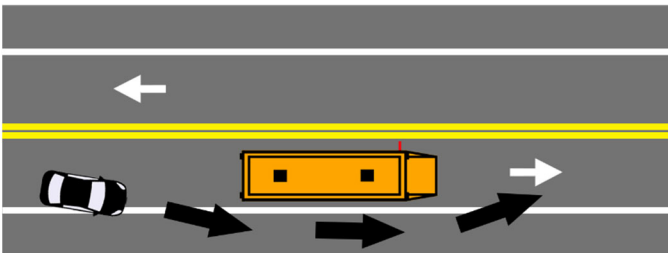
Example #2 - Direction of Travel and Side of Bus
Example



2. This is an example of front violation on the left side of the stopped school bus. The blue car passes the bus from the front on the left side.

Direction of Travel – FRONT
Side of Bus - LEFT

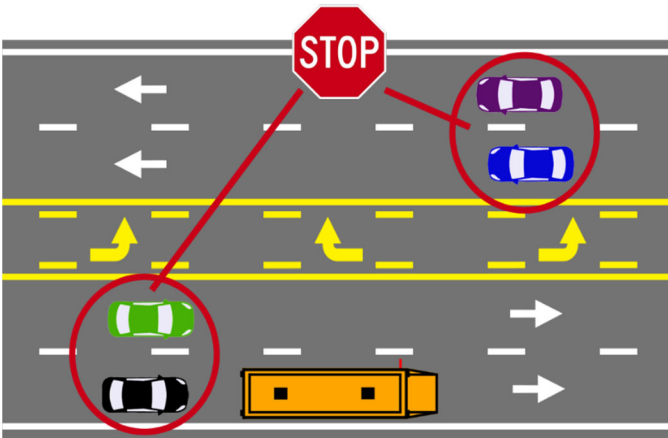
Example #3 - Direction of Travel and Side of Bus
Example



3. This is an example of rear violation on the right side of the stopped school bus. The black car passes the bus from the rear on the right side.

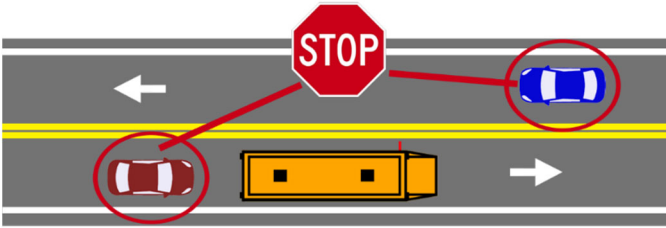
Direction of Travel – REAR
Side of Bus - RIGHT

Example #4 - Violation Example
Four – Lane Roadway with Shared Left Turn Lane



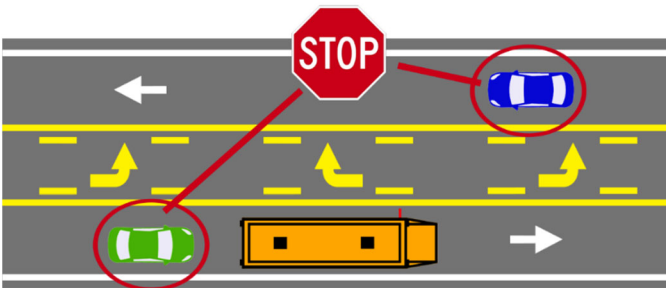
4. When a school bus stops and activates its stop arm and flashing red lights, all traffic must stop from both directions.

**Example #5 - Violation Example
Two - Lane Roadway**



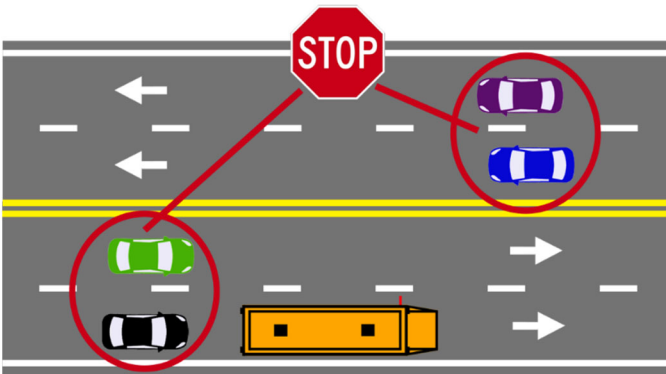
5. When a school bus stops and activates its stop arm and flashing red lights, all traffic must stop from both directions.

**Example #6 - Violation Example
Two - Lane Roadway with Shared Left Turn Lane**



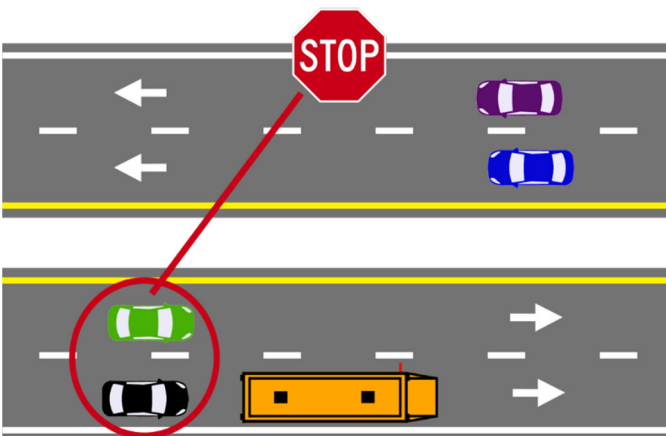
6. When a school bus stops and activates its stop arm and flashing red lights, all traffic must stop from both directions.

**Example 7 - Violation Example
Four - Lane Roadway with Double Yellow Line**



7. When a school bus stops and activates its stop arm and flashing red lights, all traffic must stop from both directions.

**Example #8 - Violation Example
Four - Lane Roadway with Median Separation**

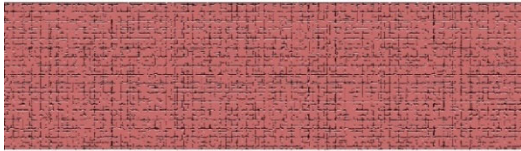


8. When a School bus stops and activates its stop arm and flashing red lights, all traffic approaching from behind must stop

Question # 9 Type of Roadway Examples

Enter the number of Violations which occurred on a paved roadway with only 2 Lanes of Traffic.

These violations would include any city street, county road or highway which is paved (concrete, asphalt, brick etc.), with or without markings and only 2 lanes of traffic.



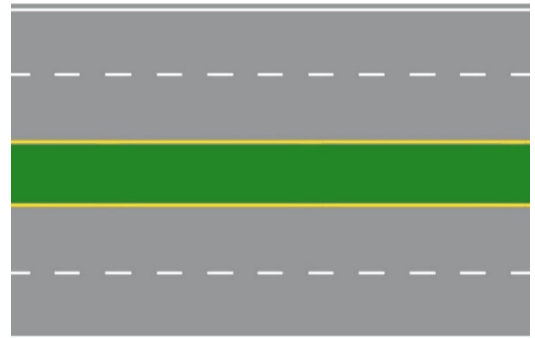
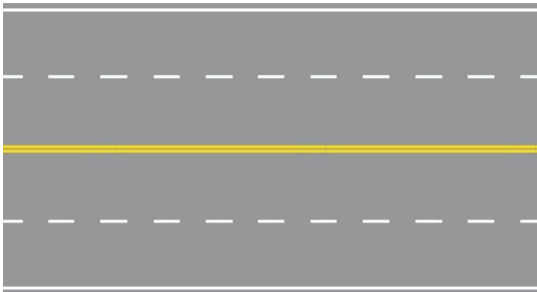
Enter the number of Violations which occurred on a paved roadway with only 2 Lanes of Traffic and a shared left turn lane.

These violations would include only those violations which occur on a paved (concrete, asphalt, brick etc.) city street, county road or highway with 2 lanes of traffic and a shared left turn lane as pictured to the right.



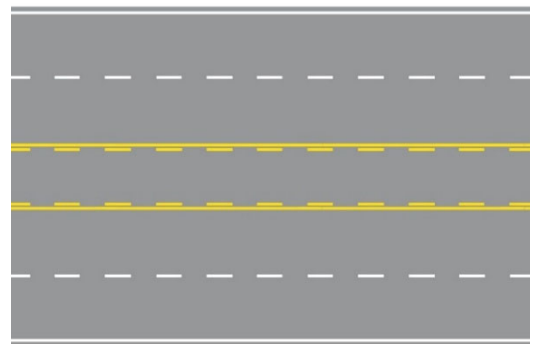
Enter the number of Violations which occurred on a paved roadway with more than 2 Lanes of Traffic.

These violations would include only those violation(s) which occur on a paved (concrete, asphalt, brick etc.) city street, county road or highway with more than 2 lanes of traffic.



Enter the number of Violations which occurred on a paved roadway with more than 2 Lanes of Traffic and a shared left turn lane.

These violations would include only those violations which occur on a paved (concrete, asphalt, brick etc.) city street, county road or highway with more than 2 lanes of traffic and a shared left turn lane as pictured to the right.



Enter the number of Violations which occurred on an UNPAVED roadway. (sand, gravel, dirt, etc)

These violations would include those violation(s) which occur on any unpaved roadway regardless of the number of lanes.

